



The Alton Millpond Rehabilitation Project is an ambitious and exciting undertaking. The project has many interconnected environmental, social, economic and creative elements that, when combined, will become a landmark in the region, if not the province.


- 


Project Vision

Ecosystem Health. Improve ecosystem health and fish habitat of Shaw's Creek by mitigating the warming effect of the pond, restoring natural stream processes and removing the barrier to passage of fish, especially Brook Trout.
- 


Education. Provide opportunities for students, residents and visitors to learn about ecology and renewable energy and engage in the stewardship of the millpond and Shaw's Creek.
- 

Lower Pollution. Work with others to mitigate untreated stormwater flow into the pond from the surrounding village.
- 

Public Art. Creatively infuse public art into every aspect of the project including structural features, ecological function, public appreciation and education.
- 

Recreation. Create an attractive and widely-known outdoor space that includes an off-line pond and year-round opportunities for active and passive recreational uses.
- 

Safety and Sustainability. Stabilize the dam and associated structures to improve safety and prevent groundwater seepage into the mill building. Restore, if possible, the ability to generate hydo-electric power and produce revenue to cover ongoing maintenance costs.
- 

Silt. The Alton Millpond contains 125+ years of silt accumulation that has deprived the downstream Shaw's Creek of vital gravels, rocks and boulders (bed load) needed for a healthy stream. The project endeavors to end the accumulation of new silt by creating a channel around the pond and restoring natural stream processes. Silt in the pond will be removed in an environmentally sustainable manner.
- 

Cultural Heritage. Preserve and enhance the special historic and scenic qualities of the Alton Millpond, the Mill Complex, associated structures and the landscape setting.



- Next Steps**
- Developing the Master Plan is a significant step forward in this ambitious project and paves the way for our next steps, which include the following elements:
- Developing and prioritizing a list of actions to be undertaken
 - Developing a project budget
 - Establishing a fundraising committee to raise the funds needed to proceed
 - Undertaking an Environmental Assessment (EA) and other approvals
 - Maintaining an ongoing dialogue with stakeholders to determine future ownership, operational, and governance arrangements through a fully transparent process
 - Creating a non-profit entity to facilitate fundraising, if confirmed by the committee to be the appropriate course of action

We thank all those involved in this project for their support and assistance and recognition that the process of rehabilitation is never easy or quick.

Contact us to get involved

To bring this project to life, we need your help. Contact us for more information or to get involved.

www.altonmillpond.org
or contact Jeremy Grant, Project Chair
Tel: 519-766-1440
Email: jeremy@seatongroup.com



ALTON MILLPOND
Rehabilitation Project: Overview
A Project to Enhance Shaw's Creek, a Tributary of the Credit River

The Millpond Rehabilitation Project aims to renew the beauty and function of the historic millpond, improve the health of the Shaw's Creek ecosystem, and expand recreational and educational opportunities.

The Alton Millpond is part of the Alton Mill Arts Centre property and a defining feature of the Village of Alton. The 1.4ha (3-acre) millpond was originally created in the 1880s to use the stored energy of Shaw's Creek, a tributary of the Credit River, to power the Alton Mill's woolen machinery. The mill was converted to other forms of production but remained in operation as a water-powered mill until 1982. The millpond today is a significant visual and recreational resource adjacent to the village's main street.

The Alton Millpond and Shaw's Creek is now in need of rehabilitation in order to reduce sediment buildup, restore fish passage, improve water quality and enhance the cold water fish habitat of Shaw's Creek. Beyond that, the intentions are to improve the visual qualities, expand the recreational and educational opportunities for residents and visitors, restore the potential for hydro-electric generation, and support the local economy.

In March 2015, a comprehensive Master Plan for the rehabilitation of the Alton Millpond was prepared by the Alton Millpond Rehabilitation Committee. The Master Plan is the guiding document for the project and sets out the long-term vision and scope of the project as well as a series of planning and design principles that will guide the delivery of this vision.

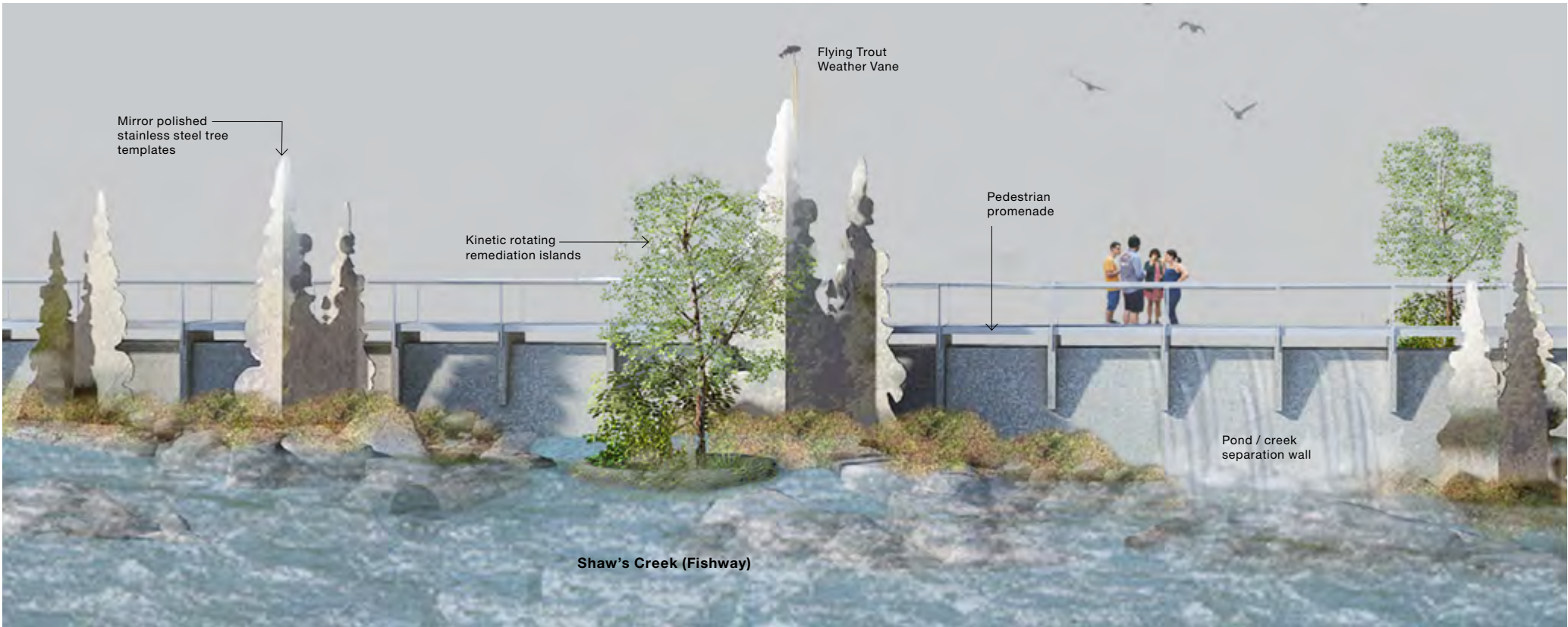
To view the full Master Plan, go to www.altonmillpond.org.



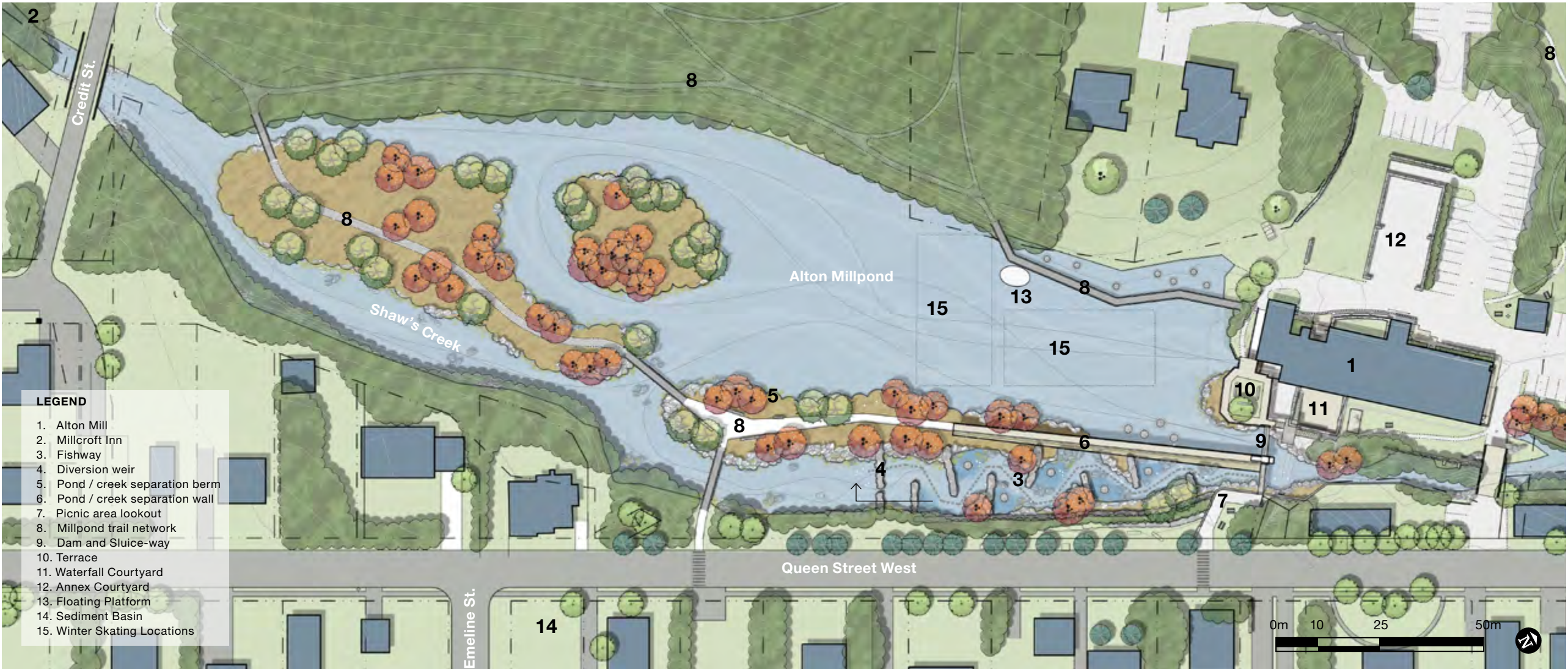
The Study Area

The Alton Millpond Rehabilitation Committee

The Millpond Rehabilitation Project was initiated in June 2009 with the formation of a committee including representation from the owners of the millpond, local and regional government agencies, environmental groups, businesses, community groups and private citizens from Alton. This committee has orchestrated and overseen the promotion, fundraising and outreach for the project and has commissioned preliminary engineering and other technical studies.



Elevation view of the Pond / Creek Separation Wall



Master Site Plan

Project Funding

Since 2009, community-based groups, businesses and individuals have been involved in fundraising for the project. The Government of Canada has also provided funding for this project through Environment Canada's Habitat Stewardship Program. The aim of the program is to support the stewardship of private and public lands and resources and, in this case, enhance the habitat for Brook Trout and other identified species in Shaw's Creek through the rehabilitation of the Alton Millpond and related structures.

The Master Site Plan

The plan to the left is an illustration of the plan for the site and the surrounding area. A new natural bypass 'fishway' around the Millpond will enhance fish habitat as well as upstream and downstream passage for fish species present in Shaw's Creek. Restoration will include rehabilitation of a portion of the old dam and construction of new structures to reinstate natural stream processes, control the pond water levels and flow of Shaw's Creek and restore the ability to generate hydroelectric power. Internationally known artist Noel Harding has been selected to lead the integration of public art elements into the project.